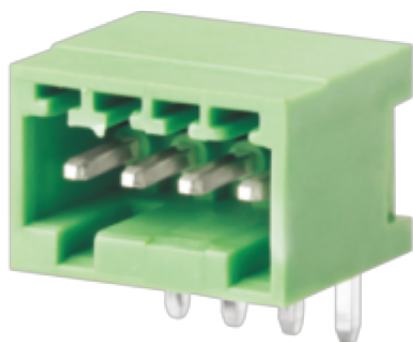


WJ15EDGRC-2.5/2.54
PLUG-IN TERMINAL BLOCK



PCB connector
 Rated current: 5 A
 Rated voltage: 150 V
 Pitch: 2.5 mm/2.54mm
 Mounting: Wave soldering



For reference only!version1.0

UL/CUL

| Use Group | B | C | D |
|------------------------------|-------|---|---|
| Rate Voltage [V] | 150 | - | - |
| Rated Current [A] | 5 | - | - |
| Wire Range [AWG] | / | | |
| Dielectric Voltage-Withstand | 1.3KV | | |

IEC

| Overvoltage Category | III | III | II |
|--|-----|-----|-----|
| Contamination Class | 3 | 2 | 2 |
| Rated Voltage [V] | 80 | 160 | 320 |
| Rated Current [A] | 6 | 6 | 6 |
| Impulse withstand voltage [KV] | 1.5 | 2.5 | 2.5 |
| Conductor cross section[solid/flexible] [mm ²] | / | | |

Material

| | |
|---------------------|------|
| Insulation Material | PA66 |
|---------------------|------|

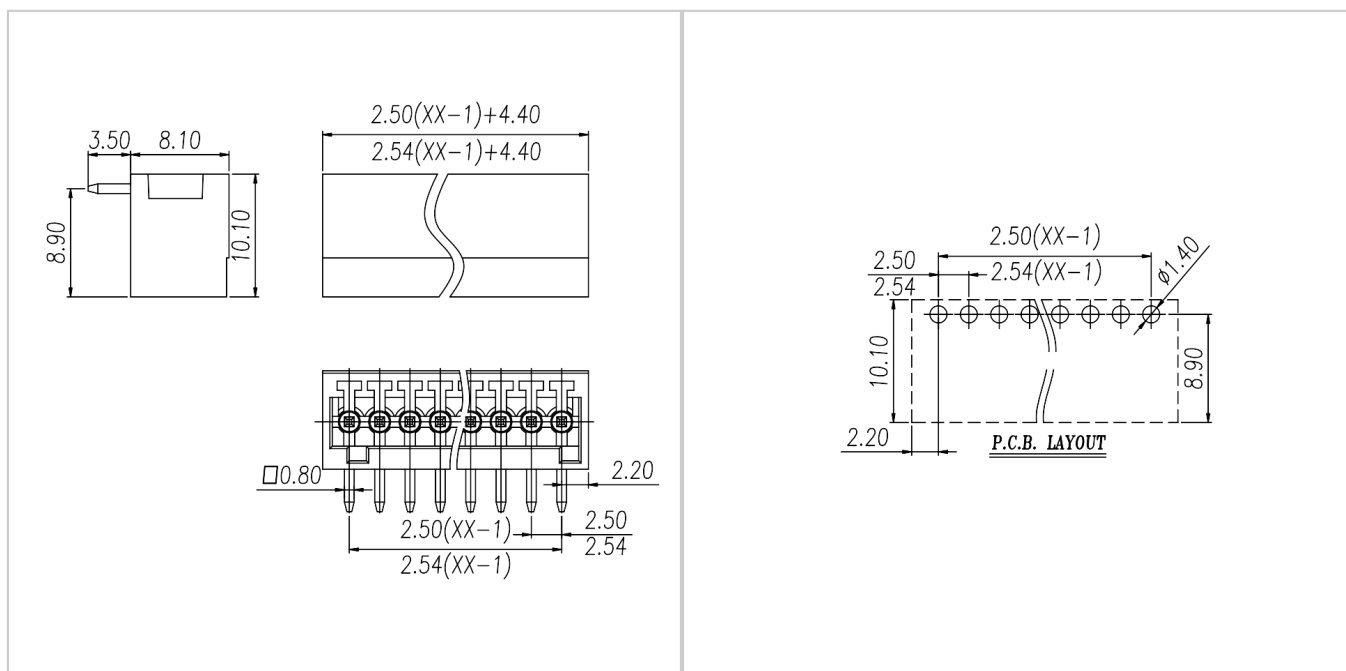
| | |
|------------------------------|--------------|
| Flame retardant rating | UL94V-0 |
| Conductor Material | Copper alloy |
| Plating of conductor surface | Sn plated |

Other Data

| | |
|----------------------------|-----------------|
| Pitch/Poles [mm]/[P] | 2.5 , 2.54/2~24 |
| Stripping Length [mm] | / |
| Screw/Torque(Max)[N.m] | / |
| Operating temperature [°C] | -40~+105 |
| Soldering temperature | 260°C/5S |
| Pin dimensions [mm] | 0.8*0.8 |
| PCB Hole Diameter [mm] | □1.4 |

Dimensions

PCB opening diagram



Accessories



[WJ15EDGKD-2.5](#)